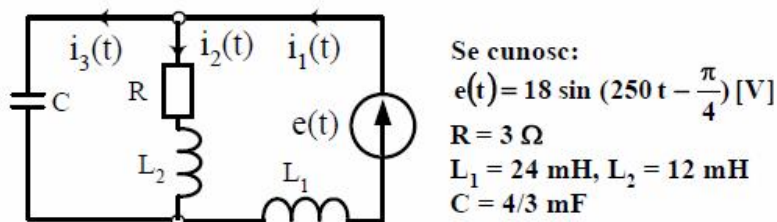
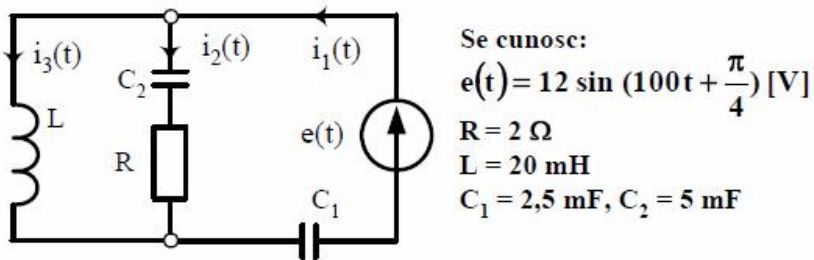
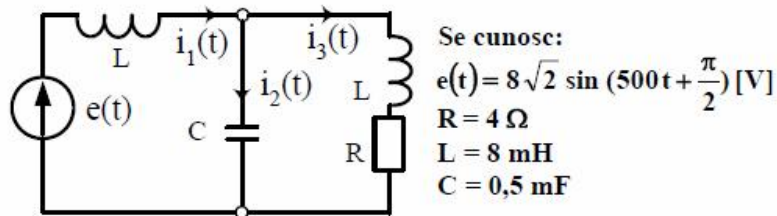
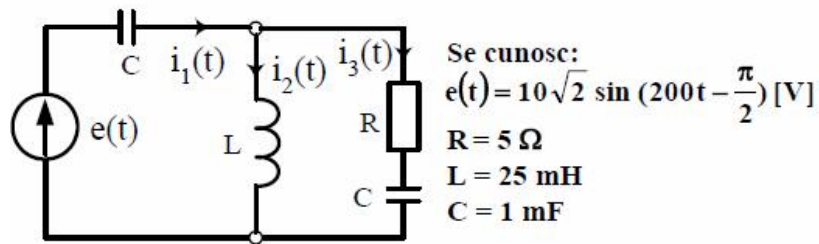


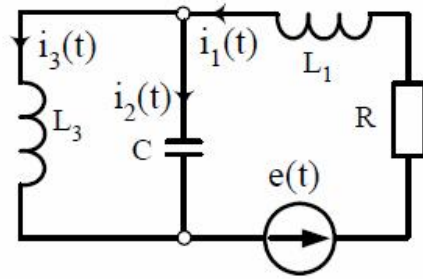
## Tema 6

Pentru problemele propuse spre rezolvare să se determine, în raport cu sensuri de referință alese opțional, valorile complexe și instantanee ale:

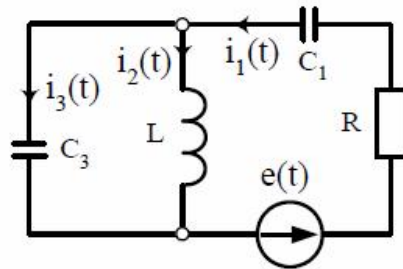
- intensitățile curenților laturilor,
- tensiunile la bornele laturilor,

Să se calculeze puterile primite de laturi pe la borne și să se efectueze bilanțul puterilor complexe sau bilanțul puterilor active și reactive.

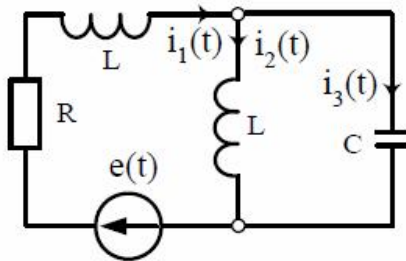




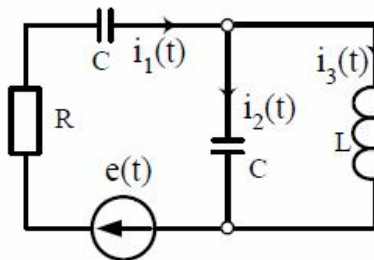
Se cunosc:  
 $e(t) = 16 \sin(100t + \frac{\pi}{4})$  [V]  
 $R = 4 \Omega$   
 $L_1 = 40 \text{ mH}, L_3 = 80 \text{ mH}$   
 $C = 2,5 \text{ mF}$



Se cunosc:  
 $e(t) = 8 \sin(1000t - \frac{\pi}{4})$  [V]  
 $R = 2 \Omega$   
 $L = 2 \text{ mH}$   
 $C_1 = 0,5 \text{ mF}, C_3 = 0,25 \text{ mF}$



Se cunosc:  
 $e(t) = 4\sqrt{2} \sin(400t + \frac{3\pi}{2})$  [V]  
 $R = 2 \Omega$   
 $L = 5 \text{ mH}$   
 $C = 2,5 \text{ mF}$



Se cunosc:  
 $e(t) = 20 \sin(250t + \frac{3\pi}{4})$  [V]  
 $R = 10 \Omega$   
 $L = 20 \text{ mH}$   
 $C = 0,4 \text{ mF}$